



BRIGHT AS THE
FUTURE!

Professional Customized Displays



+36-70-33-202-88

Contact us:
www.hhevent.eu

manager@hhevent.eu

Table of contents

PRODUCTS

Digital signage family.....	Page 1
Network management.....	Page 2
Touch screens.....	Page 3
Outdoor screens.....	Page 4
Intelligent heat treatment.....	Page 5
Mobile sliding rail series.....	Page 6
Unique intelligent displays.....	Page 7
Multiply Contents.....	Page 8



About the Company

The H+H Event Ltd. was established in 2011 with the idea that, in addition to technical advice, we would also provide our partners professional assistance in the technical management of interior and exterior spaces and design planning. We set ourselves a goal of achieving a higher quality visual experience for our current and future partners, while working within close cooperation with several development and manufacturing companies. Introducing technology and increasing efficiency is fundamental to us.

H+H Event distributes specifically creative LCD, OLED, SMD LED displays in the investment and rental market. Bearing in mind the customers' needs, we are working on the creation of a transparent and traceable system both in the field of interior design and event technology.

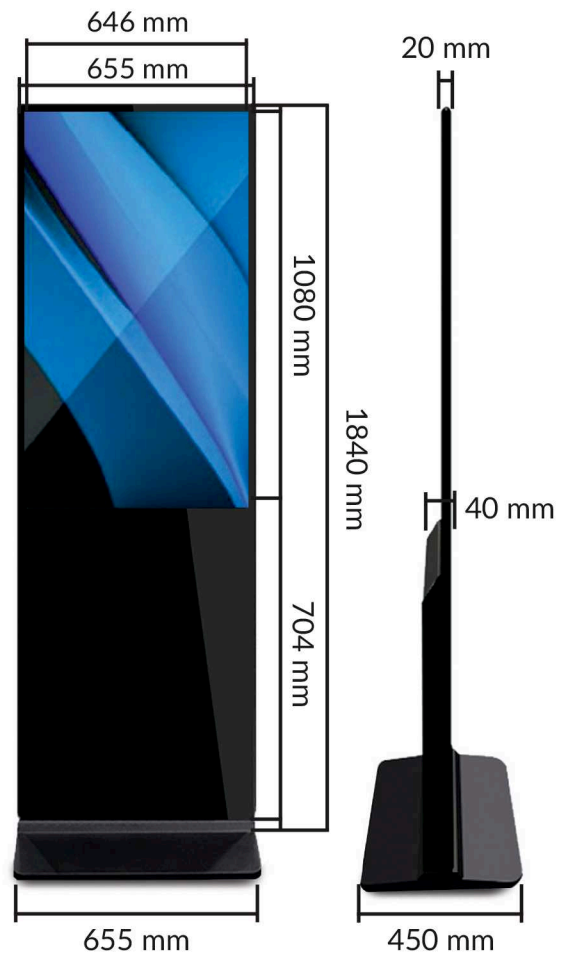
We are confident that our endeavor can serve as a model for Hungarian visual technology service providers as well. H+H Event Kft is the sole and exclusive distributor of YuChip visual technology devices in Europe.



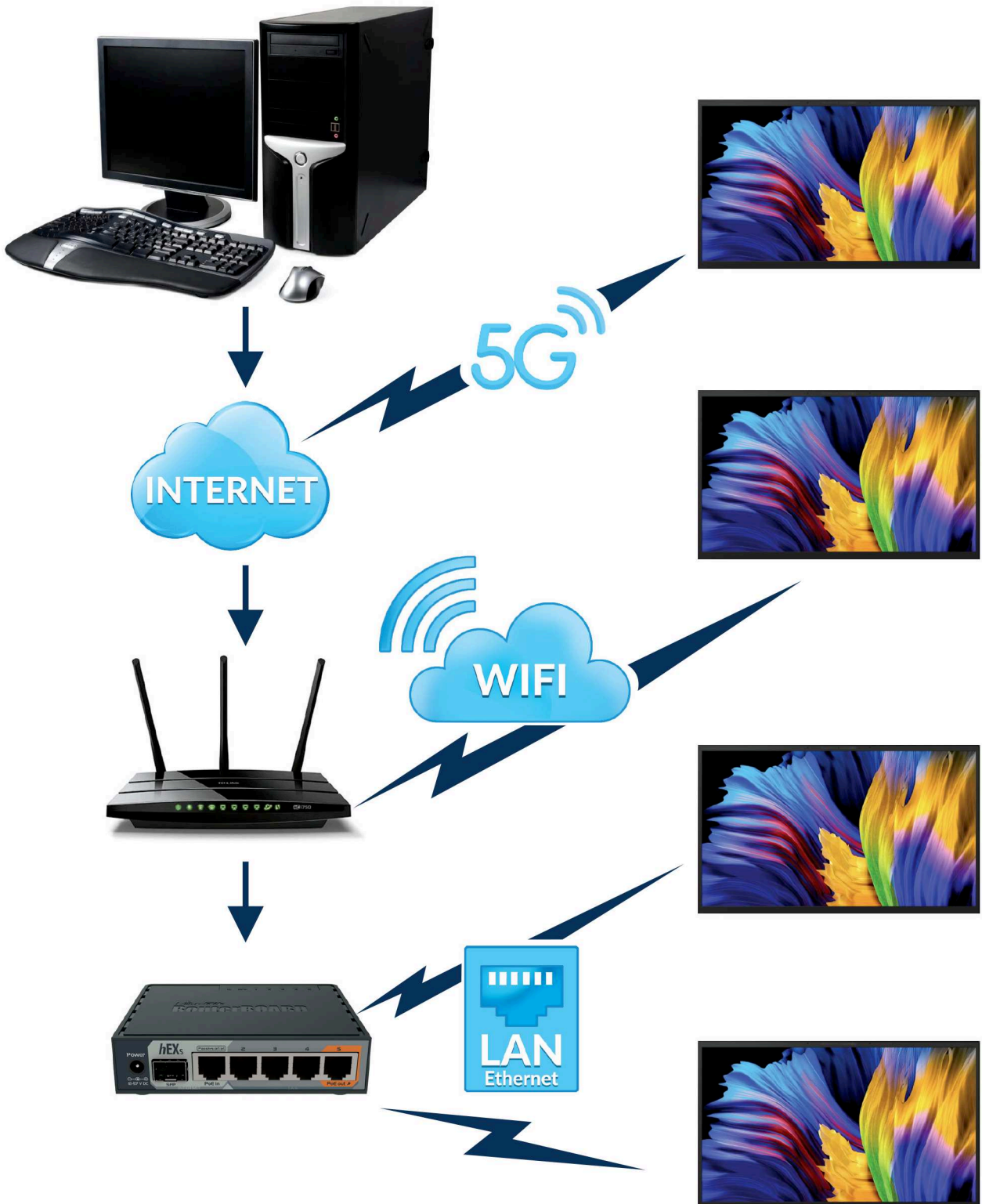


Our solutions

Our company's solutions facilitate digital communication for corporate communication or marketing connection. Thanks to the perfectly elegant design of our digital products, they will fit in the environment of your business. The combination of modernity and innovation offers a solution for your company for a stylish use of this technology. A wide selection of info screens, digital screens and information stands are waiting for you.



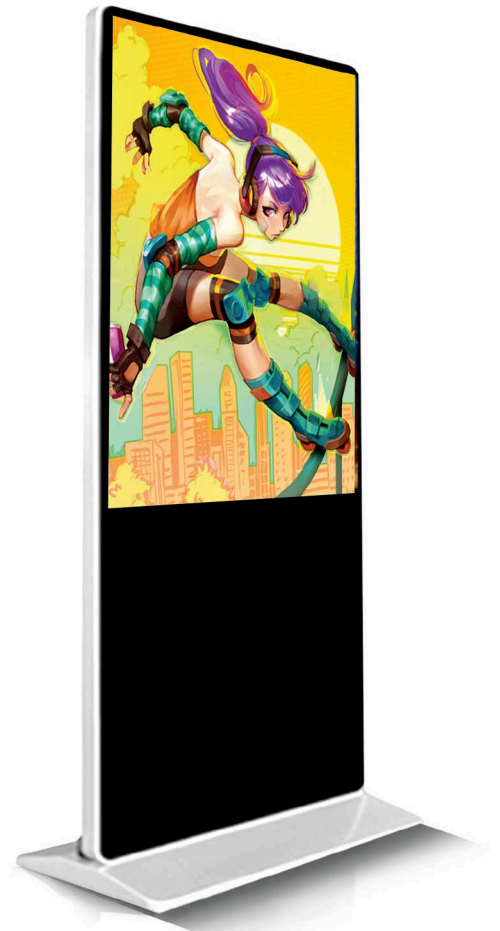
TOPOGRAPHY



All in one PC's

The All In One PC manufactured by us is a space-saving computer as all components are built in the monitor and it is also easy to install without the unnecessary cables. In our products the diagonal of the touch display can be selected. In this variant, we can even install an economical Intel Celeron processor, or any android-based computer, which can also handle general office tasks without any issues.

One of the main advantages of the built-in computer, is the possibility of connecting to the Internet via the Wi-Fi, therefore you do not need to do complicated cabling at home or in the office. Unlike traditional monitors, it also offers a built-in webcam, optionally for video calling. In addition, it can also be equipped with a memory card reader, which will be appreciated by photographers primarily.





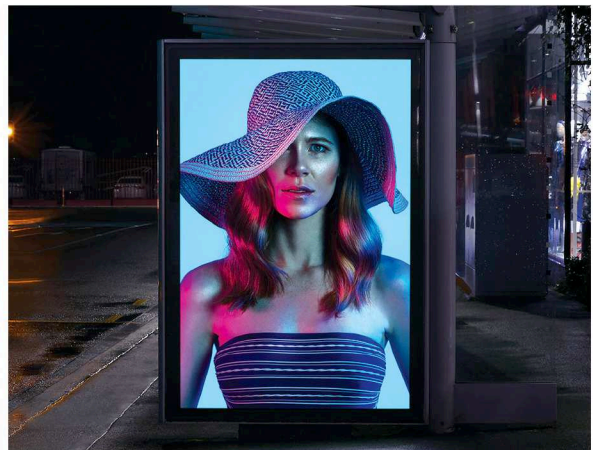
Product features

4500 nit brightness visible in sunlight, no blacking in direct sunlight, LED backlight with local dimming, ultra HD 4K resolution and intelligent heat treatment system.

4K UHD resolution

With the Ultra HD 4K resolution, the DS752LT5 produces an extremely sharp image providing an easy-to-read text in an incredible detail.

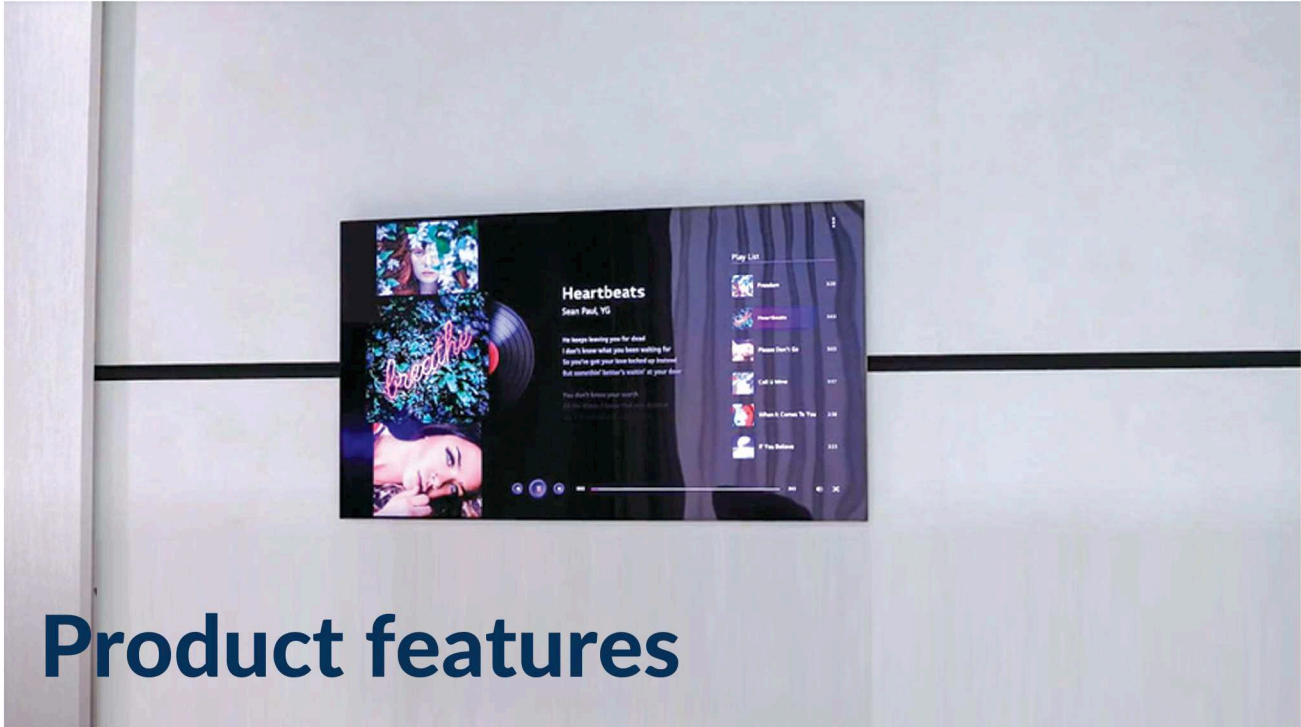




The heat generated by the display radiates from high-temperature areas, while an ss of the display is 400cd/m^2 , the light transmission is 40%, and the color range is wider. Industrial quality design, advanced technology, while a sensor continuously monitors the internal temperature to protect the system from overheating. This is achieved with extremely quiet fans.

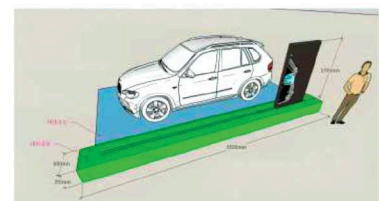
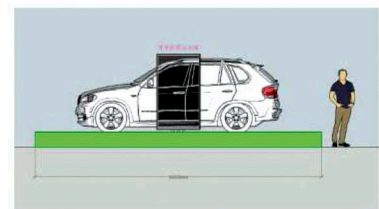
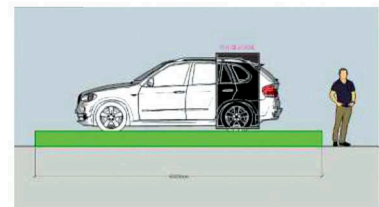
Automatic brightness control

Different external light conditions require a variety of brightness. The built-in light sensor measures the ambient light in the area and automatically adjusts the image accordingly.



Product features

The **SBR 55LT-OLED** is a transparent screen Made of LG OLED screen, it supports the HD 1080 X 1920 output, it has a fine picture with high resolution, as well as a smooth video playback and built-in audio-video processing function producing a high-quality picture and sound quality output. The brightness of the display is 400cd/m², the light transmission is 40%, and the color range is wider. Industrial quality design, advanced technology, energy saving and environmental protection.



FUNCTIONAL CHARACTERISTICS

- With large viewing angles, fast response time and high color rendering application of hard screen technology. Human-machine interaction function. Nano fully laminated capacitive touch, with a smoother touch.
- Dual screen matching to achieve a perfect image display.
- 1080*1920 ultra-high resolution for more detailed image quality.
- Ultra-high contrast ratio for sharper image display and excellent color performance.
- OLED self-illumination mode enables even brightness distribution.
- Large viewing angles horizontally and vertically of up to 178°.
- Sturdy metal structure of the entire product ensures protection over environment, magnetic fields and electrical interference. Industrial design, high reliability and stability.

AREAS OF USE

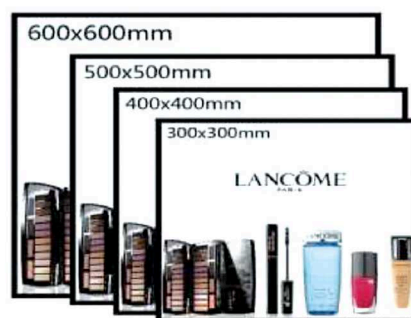
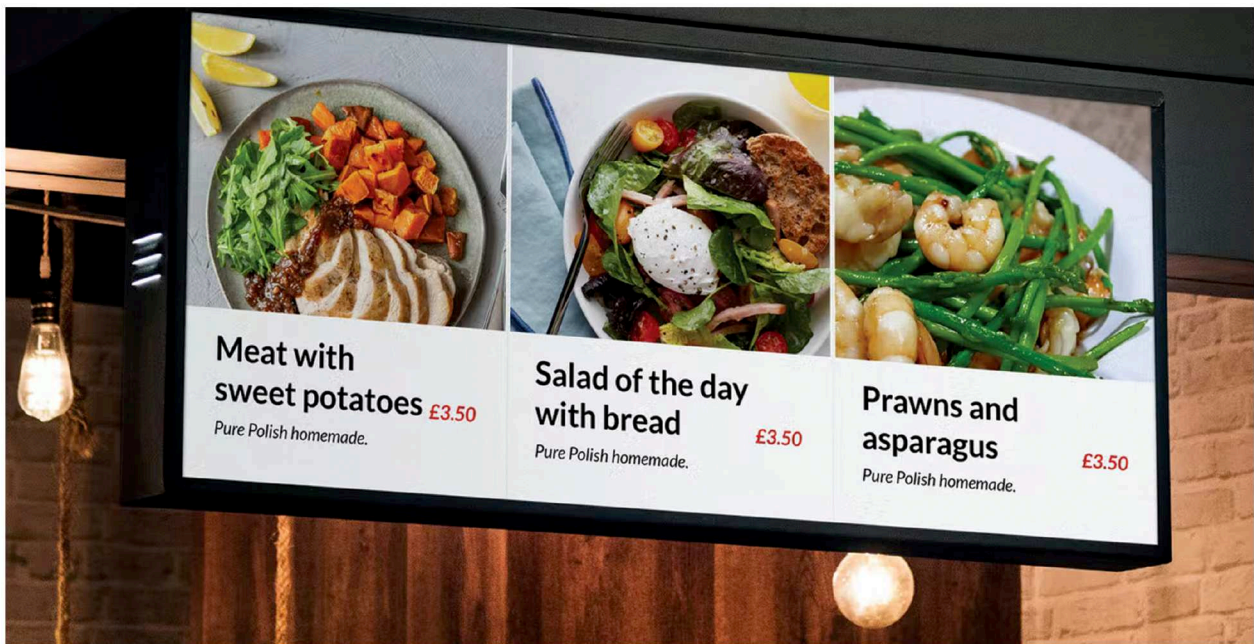




UNIQUE INTELLIGENT DISPLAYS

In the past, traditional media carriers provided an unsatisfactory flat performance from the aesthetics as well as the information's point of view, while the new multimedia LED screen displays an extreme quality improvement in terms of the richness of information and in its performance compared to traditional media carriers. It makes most of the existing space with a dynamic display of the attention-grabbing media content and it can also increase the value of artistry of the product itself. As an example, at the airports, in subways, at art galleries or in retail stores, the product itself is a structural work of art, and can be considered as a digital modern decoration. It also features individual intelligent display terminals.

Its ultra HD resolution with a high dynamic and contrast ratio provides a fine and detailed presentation, so the contents displayed are more pleasant and clear.



**FULL HD
4K UHD**

MULTIPLY CONTENTS



The screen-to-screen function allows you to divide the screen into several screens, each of which can display different contents at the same time.

You can create shared contents with the editor from several videos + several still images or moving images.

